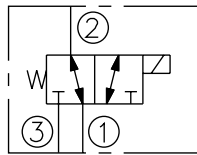


DESCRIPTION

A solenoid-operated, three-way, direct-acting spool-type, screw-in hydraulic cartridge valve.

OPERATION

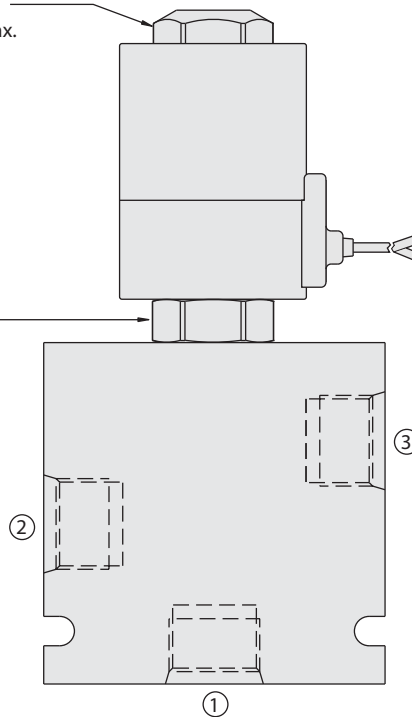
When de-energized, the **9-7986** allows flow between ② and ①, while blocking flow at ③. When energized, the spool shifts to allow flow between ② and ③, while blocking flow at ①.



**Important:
Do not overtorque.**

TORQUE:
10 ft-lbs.
(13.5 Nm) max.

TORQUE:
55 ft-lbs.
(74.5 Nm) max.



**A good ground connection
is required for the valve to
function properly.**

